

AUCTION OFFERING MEMORANDUM

By order of the US Bankruptcy Court
211 homes in 20 States
Purchase by State or Portfolio



NO RESERVE

BRAUN  **worldbid**

3

OFFERING INFORMATION

4-68

PROPERTY OVERVIEW BY STATE

69-70

BIDDING INFORMATION

71

REGISTRATION REQUIREMENTS



310.798.3123
BraunWorldbid.com

Offices throughout the United States serving the North American Markets

BRE #01900930 | BOND #0738345

**Auction Representative Braun
David Jaffe
David@BraunCo.com**



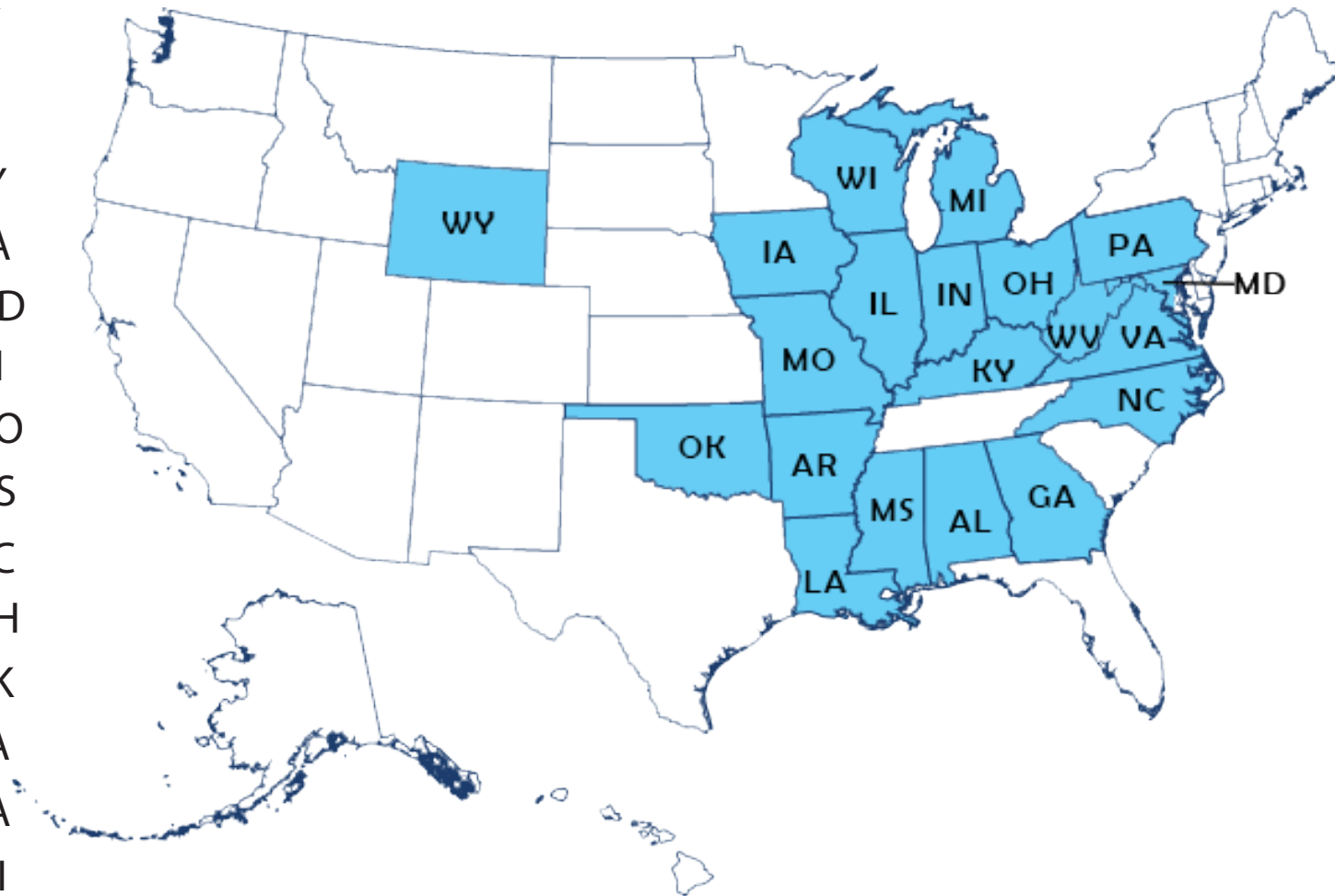
310.798.3123 | Braunworldbid.com

OFFERING INFORMATION

THIS IS AN OFFERING MEMORANDUM prepared by Braunco Inc. ("BRAUN") is intended for prospective buyers interested in the 212 properties as more particularly described herein ("Property"). The Property will be sold in groupings by state, as a single portfolio, or in other groupings as designated by BRAUN. This memorandum contains information pertaining to the Property and the sales process approved by the US Bankruptcy Court case No.:6:17-bk-07077-KSJ. It does not purport to provide a necessarily accurate summary of the Property or any of the documents related thereto, nor does it purport to be all-inclusive or to contain all of the information which prospective buyers may need or desire. All projections and analysis have been developed by BRAUN or the Seller and designated sources and are based upon assumptions relating to the general economy, competition and other factors beyond the control of BRAUN and Seller, and therefore are subject to variation. No representation is made by Braun or Seller as to the accuracy or completeness of the information contained herein, and nothing contained herein is, or shall be relied on as, a promise or representation as to the future performance of the property. Although the information contained herein is believed to be correct, BRAUN, Seller and their agents, disclaim any responsibility for inaccuracies and expect prospective purchasers to exercise independent due diligence in verifying all such information. Further BRAUN, Seller and their agents disclaim any and all liability for representations and warranties, expressed and implied, contained in, or for omissions from, this Offering Memorandum or any other written or oral communication transmitted or made available to the recipient. This Offering Memorandum does not constitute a representation that there has been no change in the business or affairs of the Properties or Seller since the date of preparation of the Confidential Offering Memorandum. Analysis and verification of the information contained in the Confidential Offering Memorandum is solely the responsibility of the prospective purchaser.

Pages 5-9
Pages 10-12
Pages 13-14
Pages 15
Pages 16-18
Pages 19-25
Pages 26
Pages 27
Pages 28-29
Pages 30-34
Pages 35-39
Pages 40-42
Pages 43-44
Pages 45-53
Pages 54
Pages 55
Pages 56
Pages 57
Pages 58-59
Pages 60
Pages 61-68

- AL
- AR
- GA
- IA
- IL
- IN
- KY
- LA
- MD
- MI
- MO
- MS
- NC
- OH
- OK
- PA
- VA
- WI
- WV
- WY
- LIMITED TITLE



295 3rd St SW, Ashland, AL, 36251

SQUARE FOOTAGE - 2,605
BED - 3
BATH - 2
LOT SIZE - 2.4 acres
YEAR BUILT - 1960



2443 County Road 37, Billingsley, AL, 36006

SQUARE FOOTAGE - 1,858
BED - 4
BATH - 2
LOT SIZE - 1.25 acres
YEAR BUILT - 1958



1312 Princeton Ave SW, Birmingham, AL, 35201

SQUARE FOOTAGE - 1,536
BED - 4
BATH - 2
LOT SIZE - 6,270 sqft
YEAR BUILT - 1920



4309 9th Ave, Birmingham, AL, 35224

SQUARE FOOTAGE - 2,080
BED - 4
BATH - 1
LOT SIZE - 7,500 sqft
YEAR BUILT - 1920



5409 Court H., Birmingham, AL, 35201



SQUARE FOOTAGE - 1,270
BED - 3
BATH - 2
LOT SIZE - 5,400 sqft
YEAR BUILT - 1930

7016 2nd Ave. S., Birmingham, AL, 35201



SQUARE FOOTAGE - 1,148
BED - 2
BATH - 1
LOT SIZE - 7,840 sqft
YEAR BUILT - 1947

7804 8th Ave. S, Birmingham, AL, 35201



SQUARE FOOTAGE - 1,764
BED - 4
BATH - 2
LOT SIZE - 7,405 sqft
YEAR BUILT - 1927

256 Wooley Rd., Hanceville, AL, 35077



SQUARE FOOTAGE - 1,935
BED - 3
BATH - 2
LOT SIZE - 1.5 acres
YEAR BUILT - 1962

907 N 13th St, Lanett, AL, 36863



SQUARE FOOTAGE - 1,767
BED - 4
BATH - 2
LOT SIZE - .26 acres
YEAR BUILT - 1955

3257 Dogwood Rd., Mobile , AL, 36602



SQUARE FOOTAGE - 1,256
BED - 3
BATH - 2
LOT SIZE - .31 acres
YEAR BUILT - 1956

208 Gardendale Dr, Montgomery, AL, 36110



SQUARE FOOTAGE - 1,056
BED - 3
BATH - 1
LOT SIZE - 6,055 sqft
YEAR BUILT - 1955

2801 Country Ct., Montgomery, AL, 36116



SQUARE FOOTAGE - 998
BED - 2
BATH - 2
LOT SIZE - 1,123 sqft
YEAR BUILT - 1988

3700 Raceway Pkwy., Mount Olive, AL, 35117



SQUARE FOOTAGE - 1,279
BED - 2
BATH - 1
LOT SIZE - 130.68 acres
YEAR BUILT - 1940

136 Lee Rd 207, Phenix City, AL, 36870



2 UNITS
STUDIO: 1,133 sqft
3 BEDROOM: 1,106 sqft
LOT SIZE - not available
YEAR BUILT - not available

1603 14th Ave, Phenix City, AL, 36867



SQUARE FOOTAGE - 1,274
BED - 3
BATH - 2
LOT SIZE - not availavle
YEAR BUILT - 1940

17415 Highway 55, Sterrett, AL, 35147



SQUARE FOOTAGE - 2,344
BED - 2
BATH - 1
LOT SIZE - .36 acres
YEAR BUILT - 1969

828 Overton Ave, Birmingham, AL, 35217

SQUARE FOOTAGE - 1,112
BED - 3
BATH - 1
LOT SIZE - 3,920 sqft
YEAR BUILT - 1920



1709 Maglee Ave, Whistler, AL, 36612

SQUARE FOOTAGE - 1,584
BED - 2
BATH - 1
LOT SIZE - not available
YEAR BUILT - 1976



900 Webster St, Blytheville, AR, 72315

SQUARE FOOTAGE - 1,088
BED - 3
BATH - 1
LOT SIZE - 5,227 sqft
YEAR BUILT - 1966



55 Valley Heart Dr., Hardy, AR, 72542

SQUARE FOOTAGE - 1,920
BED - 2
BATH - 3
LOT SIZE - 9,583 sqft
YEAR BUILT - 2003



111 Poston Rd, Jacksonville, AR, 72076

SQUARE FOOTAGE - 1,344
BED - 3
BATH - 2
LOT SIZE - not available
YEAR BUILT - 1994



2005 Abigail St, Little Rock, AR, 72204

SQUARE FOOTAGE - 1,939
BED - 3
BATH - not available
LOT SIZE - not available
YEAR BUILT - 1940



3124 Elam St., Little Rock, AR, 72204

SQUARE FOOTAGE - 1,660
BED - 3
BATH - 2
LOT SIZE - 6,485 sqft
YEAR BUILT - 1937



1509 W 23rd Ave, Pine Bluff, AR, 71601

SQUARE FOOTAGE - 1,825
BED - 3
BATH - 2
LOT SIZE - .23 acres
YEAR BUILT - 1957



4011 W 11th Ave., Pine Bluff, AR, 71601

SQUARE FOOTAGE - 1,500
BED - 2
BATH - 1
LOT SIZE - 5,000 sqft
YEAR BUILT - 1947



557 Sunshine St., Waldron, AR, 72958

SQUARE FOOTAGE - 1,664
BED - 3
BATH - 2
LOT SIZE - .25 acres
YEAR BUILT - 1958



2625 Claud Rd., White Hall, AR, 71602

SQUARE FOOTAGE - 1,384
BED - 3
BATH - 2
LOT SIZE - .68 acres
YEAR BUILT - 1961



2443 Elm Dr, Columbus, GA, 31901

SQUARE FOOTAGE - 1,326
BED - 2
BATH - 1
LOT SIZE - .38 acres
YEAR BUILT - 1930



255 Friendship Cir. , Fort Valley, GA, 31030

SQUARE FOOTAGE - 1,536
BED - 6
BATH - 4
LOT SIZE - .68 acres
YEAR BUILT - 1998



485 Carlyene Dr., Midway, GA, 31320

SQUARE FOOTAGE - 1,440
BED - 3
BATH - 2
LOT SIZE - not available
YEAR BUILT - 1978



358 7th Ave NE., Dawson, GA, 39812

SQUARE FOOTAGE - 2,719
BED - 4
BATH - 2
LOT SIZE - .30 acres
YEAR BUILT - 1900



427 W Monroe St, Thomasville, GA, 31792

SQUARE FOOTAGE - 1,888
BED - 4
BATH - 2
LOT SIZE - .27 acres
YEAR BUILT - 1968



625 3rd Ave., S., Clinton, IA, 52732



SQUARE FOOTAGE - 1,465
BED - 3
BATH - 1
LOT SIZE - not available
YEAR BUILT - not available

918 W 14th St., Davenport, IA, 52801



SQUARE FOOTAGE - 1,519
BED - 3
BATH - 2
LOT SIZE - .25 acres
YEAR BUILT - 1890

217 S 1st St, Laurens, IA, 50554



SQUARE FOOTAGE - 1,252
BED - 2
BATH - 2
LOT SIZE - 6,969 sqft
YEAR BUILT - 1916

1217 E 5th St, Alton, IL, 62002

SQUARE FOOTAGE - 3,008
 BED - 2
 BATH - 2
 LOT SIZE - 6,393 sqft
 YEAR BUILT - 1988



617 Abend St, Belleville, IL, 62220

SQUARE FOOTAGE - 840
 BED - 1
 BATH - 1
 LOT SIZE - 3,201 sqft
 YEAR BUILT - 1857



3919 W Grenshaw St, Chicago, IL, 60601

SQUARE FOOTAGE - 1,550
 BED - 4
 BATH - 1
 LOT SIZE - 3,001 sqft
 YEAR BUILT - 1885



5949 S Union Ave, Chicago, IL, 60601

SQUARE FOOTAGE - 2,633
 BED - 7
 BATH - 3
 LOT SIZE - 3,001 sqft
 YEAR BUILT - 1880



6948 S Carpenter St, Chicago, IL, 60601

SQUARE FOOTAGE - 1,747
 BED - 4
 BATH - 1
 LOT SIZE - 3,136 sqft
 YEAR BUILT - 1903



1638 N 48th St, East St. Louis, IL, 62201

SQUARE FOOTAGE - 980
 BED - 3
 BATH - 1
 LOT SIZE - not available
 YEAR BUILT - 1928



1508 Park Ln, Ford Heights, IL, 60411

SQUARE FOOTAGE - 886
 BED - 4
 BATH - 2
 LOT SIZE - 5,720 sqft
 YEAR BUILT - 1970



605 W 9th St, Johnston City, IL, 62951

SQUARE FOOTAGE - 880
 BED - 2
 BATH - 1
 LOT SIZE - 8,276 sqft
 YEAR BUILT - 1941



305 Meredocia St., Madison, IL, 62060

SQUARE FOOTAGE - 1,500
BED - 4
BATH - 3
LOT SIZE - 2,613 sqft
YEAR BUILT - 1970



316 N Horn St, West Frankfort, IL, 62896

SQUARE FOOTAGE - 1,400
BED - 2
BATH - 1
LOT SIZE - 6,098 sqft
YEAR BUILT - 1955



1619 W 6th St, Anderson, IN, 46011

SQUARE FOOTAGE - 1,728
BED - 2
BATH - 1
LOT SIZE - 6,347 sqft
YEAR BUILT - 1940



413 N 921 W., FOWLER, IN, 47944

SQUARE FOOTAGE - 1,372
BED - 3
BATH - 1
LOT SIZE - .35 acres
YEAR BUILT - 1910



2652 Buchanan St., Gary, IN, 46402

SQUARE FOOTAGE - 972
BED - 2
BATH - 1
LOT SIZE - 4,661 sqft
YEAR BUILT - 1955



2749 Jackson St., Gary, IN, 46402

SQUARE FOOTAGE - 700
BED - 2
BATH - 1
LOT SIZE - 3,025 sqft
YEAR BUILT - 1947



3801 Pennsylvania St., Gary, IN, 46402

SQUARE FOOTAGE - 1,189
BED - 2
BATH - 1
LOT SIZE - 6,000 sqft
YEAR BUILT - 1925



3861 Polk St., Gary, IN, 46402

SQUARE FOOTAGE - 1,114
BED - 2
BATH - 1
LOT SIZE - 4,791 sqft
YEAR BUILT - 1927



412 Tyler St, Gary, IN, 46402

SQUARE FOOTAGE - 1,478
BED - 3
BATH - 1.5
LOT SIZE - 1,306 sqft
YEAR BUILT - 1916



4120 Adams St., Gary, IN, 46402

SQUARE FOOTAGE - 1,018
BED - 2
BATH - 1
LOT SIZE - 6,228 sqft
YEAR BUILT - 1923



4456 Pennsylvania St., Gary, IN, 46402



SQUARE FOOTAGE - 965
BED - 2
BATH - 1
LOT SIZE - 4,791 sqft
YEAR BUILT - 1924

4608 Miller Ln., Gary, IN, 46403



SQUARE FOOTAGE - 1,008
BED - 2
BATH - 1
LOT SIZE - 6,882 sqft
YEAR BUILT - 1960

4630 E 10Th Ave., Gary, IN, 46402



SQUARE FOOTAGE - 900
BED - 3
BATH - 1
LOT SIZE - 5,009 sqft
YEAR BUILT - 1949

4640 Delaware St., Gary, IN, 46409



SQUARE FOOTAGE - 912
BED - 3
BATH - 1
LOT SIZE - 4,791 sqft
YEAR BUILT - 1928

602 Mississippi St., Gary, IN, 46402

SQUARE FOOTAGE - 720
BED - 2
BATH - 1
LOT SIZE - 3,920 sqft
YEAR BUILT - 1949



708 Vermont St., Gary, IN, 46402

SQUARE FOOTAGE - 1,660
BED - 3
BATH - 2
LOT SIZE - 3,920 sqft
YEAR BUILT - 1927



964 Hobart St, Gary, IN, 46406

SQUARE FOOTAGE - 925
BED - 3
BATH - 1
LOT SIZE - 6,250 sqft
YEAR BUILT - 1968



1912 Maryland St., Gary , IN, 46407

SQUARE FOOTAGE - 1,242
BED - 3
BATH - 1
LOT SIZE - 3,125 sqft
YEAR BUILT - 1907



415 W Franklin St., Hartford City, IN, 47348



SQUARE FOOTAGE - 3,221
BED - 4
BATH - 1
LOT SIZE - 7,187 sqft
YEAR BUILT - 1868

41 Heltonville Ln, Heltonville, IN, 47436



SQUARE FOOTAGE - 1,516
BED - 2
BATH - 2
LOT SIZE - .27 acres
YEAR BUILT - 1968

1326 N Ewing Street, Indianapolis, IN, 46218



SQUARE FOOTAGE - 1,475
BED - 3
BATH - 1
LOT SIZE - 4,800 sqft
YEAR BUILT - 1916

2810 E 34th St, Indianapolis, IN, 46218



SQUARE FOOTAGE - 1,292
BED - 3
BATH - 1
LOT SIZE - 10,000 sqft
YEAR BUILT - 1947

3423 N Sherman Dr, Indianapolis, IN, 46218

SQUARE FOOTAGE - 990
BED - 2
BATH - 1
LOT SIZE - 6,795 sqft
YEAR BUILT - 1945



33 N Hillside Dr, Manchester, IN, 46962

SQUARE FOOTAGE - 1,320
BED - 2
BATH - 1
LOT SIZE - 4,791 sqft
YEAR BUILT - 1976



830 E 26th Street, Marion, IN, 46952

2 UNITS
STUDIO: 1,096 sqft
3 BEDROOM: 1,096 sqft
BATH - 2
LOT SIZE - not available
YEAR BUILT - not available



1108 Bancroft Ave, Rochester, IN, 46975

SQUARE FOOTAGE - 1,515
BED - 2
BATH - 2.5
LOT SIZE - 5,227 sqft
YEAR BUILT - 1930



455 W Hendricks St, Shelbyville, IN, 46176



SQUARE FOOTAGE - 1,029
BED - 2
BATH - 1
LOT SIZE - 7,187 sqft
YEAR BUILT - 1900

606 Dundee St, South Bend, IN, 46601



SQUARE FOOTAGE - 1,564
BED - 2
BATH - 1
LOT SIZE - 4,800 sqft
YEAR BUILT - 1940

842 S Bendix Dr, South Bend, IN, 46601



SQUARE FOOTAGE - 852
BED - 3
BATH - 1
LOT SIZE - 5,639 sqft
YEAR BUILT - 1950

13424 Harber Rd, Yoder, IN, 46798



SQUARE FOOTAGE - 1,730
BED - 2
BATH - 1
LOT SIZE - 1 acre
YEAR BUILT - 1940

323 N 20th St, Louisville, KY, 40202

SQUARE FOOTAGE - 1,521
BED - 2
BATH - 1
LOT SIZE - 2,614 sqft
YEAR BUILT - 1900



1168 Harless Creek, Regina , KY, 41559

SQUARE FOOTAGE - 1,200
BED - 2
BATH - 1
LOT SIZE - 1 acre
YEAR BUILT - 1949



12670 Carroll Dr, Amite, LA, 70422



2 UNITS
STUDIO: not available
3 BEDROOM: 1,640 sqft, 2 bath
LOT SIZE - not available
YEAR BUILT - not available

72381 Dahlia St, Covington, LA, 70433



2 UNITS
SQUARE FOOTAGE - 1,428
BED - 3
BATH - 2
LOT SIZE - not available
YEAR BUILT - not available

126 Billedeau Dr, Pineville, LA, 71359



SQUARE FOOTAGE - 1,120
BED - 3
BATH - 1
LOT SIZE - 8,276 sqft
YEAR BUILT - 1960

57758 Grove Rd., Plaquemine, LA, 70764



SQUARE FOOTAGE - 1,202
BED - 3
BATH - 1
LOT SIZE - 6,534 sqft
YEAR BUILT - 1958

2418 E. Oliver St., Baltimore, MD, 21213

SQUARE FOOTAGE - 1,188
BED - 3
BATH - 1
LOT SIZE - 1,306 sqft
YEAR BUILT - 1900



2916 W Lafayette Ave., Baltimore, MD, 21213

SQUARE FOOTAGE - not available
BED - not available
BATH - not available
LOT SIZE - 1,742 sqft
YEAR BUILT - 1864



236 Columbia St, Cumberland, MD, 21502

SQUARE FOOTAGE - 924
BED - 2
BATH - not available
LOT SIZE - 2,039 sqft
YEAR BUILT - 1900



536 Elk Mills Rd., Elk Mills, MD, 29120

SQUARE FOOTAGE - 1,520
BED - 2
BATH - 1
LOT SIZE - .73 acres
YEAR BUILT - not available



113 Franklin St, Hancock, MD, 21750

SQUARE FOOTAGE - 1,252
BED - 3
BATH - 1.5
LOT SIZE - 9,600 sqft
YEAR BUILT - 1950



204 Beulah Ave, Battle Creek, MI, 49015

SQUARE FOOTAGE - 1,036
BED - 3
BATH - 1
LOT SIZE - .5 acres
YEAR BUILT - 1910



34 Maple Terrace, Battle Creek, MI, 49015

SQUARE FOOTAGE - 1,250
BED - 3
BATH - 1
LOT SIZE - 3,920 sqft
YEAR BUILT - 1911



99 Clay St, Battle Creek, MI, 49015

SQUARE FOOTAGE - 1,382
BED - 3
BATH - 1
LOT SIZE - 2,613 sqft
YEAR BUILT - 1890



598 Broadway Ave, Benton Harbor, MI, 49022

SQUARE FOOTAGE - 2,468
BED - 5
BATH - 2
LOT SIZE - 6,534 sqft
YEAR BUILT - 1900



335 Norman St, Caro, MI, 48723

SQUARE FOOTAGE - 1,232
BED - 3
BATH - 1
LOT SIZE - 6,098 sqft
YEAR BUILT - not available



1946 Hosler St., Flint, MI, 48503

SQUARE FOOTAGE - 936
BED - 3
BATH - 1
LOT SIZE - 5,227 sqft
YEAR BUILT - 1953



2002 Dakota Ave., Flint, MI, 48506

SQUARE FOOTAGE - 660
BED - 3
BATH - 1
LOT SIZE - 4,675 sqft
YEAR BUILT - 1929



2618 Wolcott St., Flint, MI, 48504

SQUARE FOOTAGE - 1,600
BED - 3
BATH - 1.5
LOT SIZE - 6,969 sqft
YEAR BUILT - 1948



3411 Brownell Blvd., Flint, MI, 48509

SQUARE FOOTAGE - 771
BED - 2
BATH - 1
LOT SIZE - 5,894 sqft
YEAR BUILT - 1947



13744 Fenelon St, Hamtramck, MI, 48212

SQUARE FOOTAGE - 1,920
BED - 3
BATH - 1
LOT SIZE - .69 acres
YEAR BUILT - 1921



10585 N Lake Road, Ironwood, MI, 49938

2 UNITS
STUDIO: 720 sqft, 1 bath
2 BEDROOM: 720 sqft, 1 bath
LOT SIZE - not available
YEAR BUILT - not available



1021 Haven St, Mount Morris, MI, 48458

SQUARE FOOTAGE - 900
BED - 2
BATH - 1
LOT SIZE - 10,018 sqft
YEAR BUILT - 1960



234 Allen Ave., Muskegan, MI, 49442

SQUARE FOOTAGE - 840
BED - 2
BATH - 1
LOT SIZE - 4,356 sqft
YEAR BUILT - not available



2924 7th St., Muskegon, MI, 49442

SQUARE FOOTAGE - 1,090
BED - 2
BATH - 1
LOT SIZE - 6,098 sqft
YEAR BUILT - 1930



475 South State St, Otisville, MI, 48463

SQUARE FOOTAGE - 1,291
BED - 3
BATH - 1
LOT SIZE - .42 acres
YEAR BUILT - 1953



611 W 2nd St, Pinconning, MI, 48650

SQUARE FOOTAGE - 1,646
BED - 4
BATH - 1
LOT SIZE - not available
YEAR BUILT - 1920



2229 Emmons Ave. , Warren, MI, 48088

SQUARE FOOTAGE - 611
BED - 2
BATH - 1
LOT SIZE - 8,712 sqft
YEAR BUILT - 1939



707 S. Orchard St., Clinton, MO, 64735

SQUARE FOOTAGE - 1,008
BED - 2
BATH - 1
LOT SIZE - .23 acres
YEAR BUILT - 1900



13552 E Sunrise Lake Dr, DeSoto, MO, 63020

SQUARE FOOTAGE - 960
BED - 3
BATH - 1
LOT SIZE - .48 acres
YEAR BUILT - 1976



105 Bell St, Excelsior Springs, MO, 64024

SQUARE FOOTAGE - 976
BED - 2
BATH - 1
LOT SIZE - .77 acres
YEAR BUILT - 1900



13841 Apache Way, Greentop, MO, 63546

3 UNITS
STUDIO - not available
3 BEDROOM - 1,540 sqft, 2 bath
3 BEDROOM - 1,540 sqft, 1 bath
LOT SIZE - not available
YEAR BUILT - not available



534 S Hardy Ave., Independence, MO, 64050

SQUARE FOOTAGE - 966
BED - 2
BATH - 1
LOT SIZE - 4,356 sqft
YEAR BUILT - 1921



1016 Central St, Joplin, MO, 64801

SQUARE FOOTAGE - 984
BED - 3
BATH - 1
LOT SIZE - .32 acres
YEAR BUILT - 1900



2019 Montgall Ave., Kansas City, MO, 64101

SQUARE FOOTAGE - 1,416
BED - 2
BATH - 1
LOT SIZE - 3,960 sqft
YEAR BUILT - 1905



3411 E 36th St., Kansas City, MO, 64101

SQUARE FOOTAGE - 1,517
BED - 2
BATH - 1
LOT SIZE - 4,356 sqft
YEAR BUILT - 1917



6833 Bales Ave, Kansas City, MO, 64132

SQUARE FOOTAGE - 768
BED - 3
BATH - 1
LOT SIZE - 7,000 sqft
YEAR BUILT - 1954



1736 Crystal Ct, St Louis, MO, 63130

SQUARE FOOTAGE - 1,101
BED - 3
BATH - 1
LOT SIZE - 8,407 sqft
YEAR BUILT - 1946



2925 Lyndhurst Ave, St Louis, MO, 63130

SQUARE FOOTAGE - 1,186
BED - 3
BATH - 1
LOT SIZE - 8,001 sqft
YEAR BUILT - 1948



8846 Bobb Ave, St Louis, MO, 63130

SQUARE FOOTAGE - 818
BED - 2
BATH - 1
LOT SIZE - 6,882
YEAR BUILT - 1948



3118 Whittier St, St. Louis, MO, 63130

SQUARE FOOTAGE - 958
BED - 2
BATH - 2
LOT SIZE - 3,562 sqft
YEAR BUILT - 1913



4857 Palm St., St. Louis, MO, 63130

2 UNITS
2 BEDROOM - 877 sqft, 1 bath
OTHER - not available
LOT SIZE - not available
YEAR BUILT - not available



4912 Arlington Ave , St. Louis, MO, 63120

SQUARE FOOTAGE - 1,026
BED - 1
BATH - 1
LOT SIZE - 5,958 sqft
YEAR BUILT - 1923



5811 Theodore Ave., St. Louis, MO, 63120

SQUARE FOOTAGE - 1,254
BED - 2
BATH - 2
LOT SIZE - 4,492 sqft
YEAR BUILT - 1907



8451 Lowell St., St. Louis, MO, 63130

SQUARE FOOTAGE - 731
BED - 2
BATH - 1
LOT SIZE - 3,613 sqft
YEAR BUILT - 1904



33212 Circle Dr., Sunrise Beach, MO, 65079

SQUARE FOOTAGE - 1,000
BED - 1
BATH - 1
LOT SIZE - .25 acres
YEAR BUILT - 1952



603 111th St, Amory, MS, 38821



SQUARE FOOTAGE - 840
BED - 2
BATH - 1
LOT SIZE - 8,712 sqft
YEAR BUILT - 1930

157 W Madison St, Durant, MS, 39063



SQUARE FOOTAGE - 1,176
BED - 4
BATH - 2
LOT SIZE - 4,791 sqft
YEAR BUILT - 1920

363 Lamar St, Durant, MS, 39063



SQUARE FOOTAGE - 2,010
BED - 3
BATH - 2
LOT SIZE - .5 acres
YEAR BUILT - 1920

54 Trest Rd., HEIDELBERG, MS, 39439



SQUARE FOOTAGE - 1,550
BED - 1
BATH - 1
LOT SIZE - 5 acres
YEAR BUILT - 1973

174 Road of Remembrance, Jackson, MS, 39209

SQUARE FOOTAGE - 1,901
BED - 3
BATH - 2
LOT SIZE - 9,600 sqft
YEAR BUILT - 1985



237 Sewanee, Jackson, MS, 39209

SQUARE FOOTAGE - 1,432
BED - 3
BATH - 1
LOT SIZE - .34 acres
YEAR BUILT - 1948



2813 Marydale Dr., Jackson, MS, 39209

SQUARE FOOTAGE - 1,258
BED - 3
BATH - 1.5
LOT SIZE - .33 acres
YEAR BUILT - 1959



614 W Hillsdale Dr., Jackson, MS, 32909

SQUARE FOOTAGE - 1,207
BED - 3
BATH - 1
LOT SIZE - 9,978 sqft
YEAR BUILT - 1952



913 Winn St., Jackson, MS, 32909

SQUARE FOOTAGE - 1,540
BED - 3
BATH - 2
LOT SIZE - .25 acres
YEAR BUILT - 1987



390 Sweet Gum Bottom Rd., Meridian, MS, 39301

SQUARE FOOTAGE - 1,299
BED - 2
BATH - 1
LOT SIZE - .24 acres
YEAR BUILT - 1957



2522 Jefferson Ave, Pascagoula, MS, 39567

SQUARE FOOTAGE - 2,324
BED - 4
BATH - 2
LOT SIZE - .78 acres
YEAR BUILT - 1946



303 South Gray Ave, Picayune, MS, 39466

SQUARE FOOTAGE - 1,768
BED - 2
BATH - 1
LOT SIZE - 10,018 sqft
YEAR BUILT - 1960



316 Bonner Bridge Road, Aulander, NC, 27805

SQUARE FOOTAGE - 880
BED - 3
BATH - 1
LOT SIZE - .59 acres
YEAR BUILT - 1890



306 Buchanan Ln., Burnsville, NC, 28714

SQUARE FOOTAGE - 760
BED - 2
BATH - 1
LOT SIZE - .7 acres
YEAR BUILT - 1962



172 US Hwy 158 W., Gatesville, NC, 27938

2 UNITS
5 BEDROOM - 3,270 sqft
4 BEDROOM - 3,120 sqft
BATH - 2.5
LOT SIZE - not available
YEAR BUILT - 1974



1202 Montlieu Ave, High Point, NC, 27262

SQUARE FOOTAGE - 1,114
BED - 2
BATH - 1
LOT SIZE - .38 acres
YEAR BUILT - 1908



411 Peru Rd., Morven, NC, 28119

SQUARE FOOTAGE - 960
BED - 3
BATH - 1
LOT SIZE - 8,712 sqft
YEAR BUILT - 1968



1404 Andrus St, Akron, OH, 44301

SQUARE FOOTAGE - 1,462
 BED - 3
 BATH - 1
 LOT SIZE - 3,200 sqft
 YEAR BUILT - 1923



1803 S Ridge Rd., Ashtabula, OH, 44004

SQUARE FOOTAGE - 1,018
 BED - 3
 BATH - 1
 LOT SIZE - 1.82 acres
 YEAR BUILT - 1900



5737 Liberty Hill Rd., Chillicothe, OH, 45601

SQUARE FOOTAGE - 1,148
 BED - 2
 BATH - 2
 LOT SIZE - 1.01 acres
 YEAR BUILT - 1962



1216 Gilsey Ave, Cincinnati, OH, 45202

SQUARE FOOTAGE - 1,956
 BED - 3
 BATH - 1
 LOT SIZE - 6,011 sqft
 YEAR BUILT - 1915



1128 Mansion Ave, Cincinnati, OH, 45202

SQUARE FOOTAGE - 1,600
 BED - 3
 BATH - 1
 LOT SIZE - 2,613 sqft
 YEAR BUILT - 1904



11405 Melba Ave, Cleveland, OH, 44120

SQUARE FOOTAGE - 1,850
 BED - 4
 BATH - 2
 LOT SIZE - 4,407 sqft
 YEAR BUILT - 1920



1260 E 59th St, Cleveland, OH, 44103

SQUARE FOOTAGE - 2,156
 BED - 6
 BATH - 2
 LOT SIZE - 5,070 sqft
 YEAR BUILT - 1910



1319 E 91st St, Cleveland, OH, 44120

SQUARE FOOTAGE - 1,512
 BED - 4
 BATH - 1
 LOT SIZE - 3,600 sqft
 YEAR BUILT - 1910



14612 Orinoco Ave, Cleveland, OH, 44120

SQUARE FOOTAGE - 1,946
 BED - 4
 BATH - 2
 LOT SIZE - 3,010 sqft
 YEAR BUILT - 1910



3332 E 128th St., Cleveland, OH, 44120

SQUARE FOOTAGE - 1,740
 BED - 4
 BATH - 2
 LOT SIZE - 6,000 sqft
 YEAR BUILT - 1915



3378 E 132nd St, Cleveland, OH, 44120

SQUARE FOOTAGE - 1,063
 BED - 2
 BATH - 1
 LOT SIZE - 4,240 sqft
 YEAR BUILT - 1916



924 E 129th St, Cleveland, OH, 44108

SQUARE FOOTAGE - 1,305
 BED - 3
 BATH - 1
 LOT SIZE - 3,185 sqft
 YEAR BUILT - 1925



1060 Olmstead Ave, Columbus, OH, 43201



SQUARE FOOTAGE - 778
BED - 2
BATH - 1
LOT SIZE - 7,405 sqft
YEAR BUILT - 1920

1021 Wyoming St, Dayton, OH, 45402



SQUARE FOOTAGE - 1,960
BED - 3
BATH - 1
LOT SIZE - 3,629 sqft
YEAR BUILT - 1907

1111 W Riverview Ave, Dayton, OH, 45402



SQUARE FOOTAGE - 1,810
BED - 3
BATH - 1.5
LOT SIZE - 4,051 SQFT
YEAR BUILT - 1895

304 Clover St, Dayton, OH, 45402



SQUARE FOOTAGE - 1,376
BED - 2
BATH - 1
LOT SIZE - 2,888 sqft
YEAR BUILT - 1902

62 S Garfield St, Dayton, OH, 04540



SQUARE FOOTAGE - 1,608
 BED - 3
 BATH - 1
 LOT SIZE - 3,920 sqft
 YEAR BUILT - 1900

728 Whitmore Ave, Dayton, OH, 45402



SQUARE FOOTAGE - 576
 BED - 2
 BATH - 1
 LOT SIZE - 4,791 sqft
 YEAR BUILT - 1952

1729 Rosedale, East Cleveland, OH, 44110



SQUARE FOOTAGE - 2,762
 BED - 4
 BATH - 2
 LOT SIZE - 3,920 sqft
 YEAR BUILT - 1917

3103 County Road N-30, Edon, OH, 43518



SQUARE FOOTAGE - 1,204
 BED - 2
 BATH - 1
 LOT SIZE - 1 acre
 YEAR BUILT - 1920

75 Woodrow St, Hamilton, OH, 45013



SQUARE FOOTAGE - 864
BED - 2
BATH - 1
LOT SIZE - 3,358 sqft
YEAR BUILT - 1945

141 School St, LaRue, OH, 43332



SQUARE FOOTAGE - 1,528
BED - 3
BATH - 1
LOT SIZE - 10,018 sqft
YEAR BUILT - 1952

1144 Washington Ave, Lorain, OH, 44052



SQUARE FOOTAGE - 1,248
BED - 3
BATH - 2
LOT SIZE - 3,920 sqft
YEAR BUILT - 1900

250 Helen Ave. , Mansfield, OH, 44902



SQUARE FOOTAGE - 1,481
BED - 3
BATH - 1
LOT SIZE - 3,534 sqft
YEAR BUILT - 1932

3471 Watson Marshall Road, McDonald, OH, 44437



SQUARE FOOTAGE - 1,159
BED - 2
BATH - 1
LOT SIZE - .56 acres
YEAR BUILT - 1952

1317 Wellesley Ave, Steubenville, OH, 43952



SQUARE FOOTAGE - 1,132
BED - 3
BATH - 1
LOT SIZE - 2,613 sqft
YEAR BUILT - 1930

996 Main St., Wellsville, OH, 43968



SQUARE FOOTAGE - 1,910
BED - 6
BATH - 2
LOT SIZE - 4,268 sqft
YEAR BUILT - 1910

6303 US Rte 35 E, West Alexandria, OH, 45381



2 UNITS
2 BEDROOM - 1,224 sqft, 1 bath
OTHER - not available
LOT SIZE - not available
YEAR BUILT - not available

221 Curry Pl, Youngstown, OH, 44511



SQUARE FOOTAGE - 1,756
 BED - 3
 BATH - 1.5
 LOT SIZE - 5,619 sqft
 YEAR BUILT - 1926

3128 Firnley Ave., Youngstown, OH, 44511



SQUARE FOOTAGE - 1,152
 BED - 2
 BATH - 1
 LOT SIZE - 6,969 sqft
 YEAR BUILT - 1954

3432 Hudson Ave., Youngstown, OH, 44511



SQUARE FOOTAGE - 2,058
 BED - 3
 BATH - 1
 LOT SIZE - 6,098 sqft
 YEAR BUILT - 1922

3608 Risher Rd, Youngstown, OH, 44511



SQUARE FOOTAGE - 1,272
 BED - 4
 BATH - 1
 LOT SIZE - 10,018 sqft
 YEAR BUILT - 1941

549 Cameron Ave, Youngstown, OH, 44502

SQUARE FOOTAGE - 1,272
BED - 3
BATH - 1
LOT SIZE - 6,229 sqft
YEAR BUILT - 1972



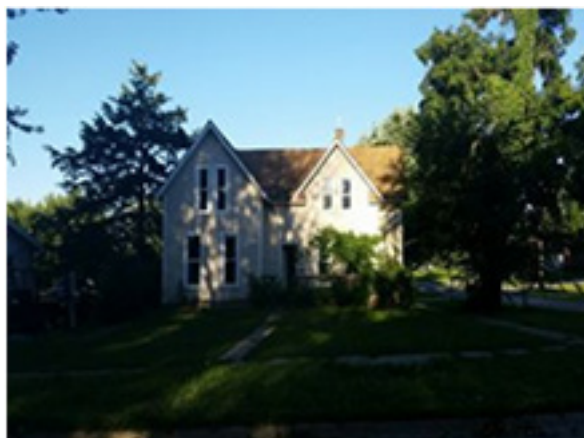
221 S Main St., Okeene , OK, 73763

SQUARE FOOTAGE - 1,848
BED - 3
BATH - 1
LOT SIZE - 10,454 sqft
YEAR BUILT - 1961



2429 Cox City Rd., Ninnekah, OK, 73082

SQUARE FOOTAGE - 1,112
BED - 3
BATH - 1
LOT SIZE - .8 acres
YEAR BUILT - 1949



410 Knox Ave, Monessen, PA, 15062

SQUARE FOOTAGE - 1,680
BED - 4
BATH - 1
LOT SIZE - 5,662 sqft
YEAR BUILT - 1920



935 Blankenship Rd, Martinsville, VA, 24112

SQUARE FOOTAGE - 964
BED - 1
BATH - 1
LOT SIZE - 5,096 sqft
YEAR BUILT - 1973



935 Blankenship Rd, Martinsville, VA, 24112

SQUARE FOOTAGE - 1,604
BED - 3
BATH - 2
LOT SIZE - 4,356 sqft
YEAR BUILT - 1930



2854 N 28th St., Milwaukee, WI, 53212

SQUARE FOOTAGE - 1,538
BED - 4
BATH - 2
LOT SIZE - 3,741 sqft
YEAR BUILT - 1904



2917 N 16th St, Milwaukee, WI, 53212

SQUARE FOOTAGE - 1,326
BED - 3
BATH - 1
LOT SIZE - 3,484 sqft
YEAR BUILT - 1905



3046 N 7th St, Milwaukee, WI, 53212

SQUARE FOOTAGE - 1,124
BED - 4
BATH - 1
LOT SIZE - 8,270 sqft
YEAR BUILT - 1904



1116 13th St, Racine, WI, 53403

SQUARE FOOTAGE - 1,678
BED - 4
BATH - 2
LOT SIZE - 4,235 sqft
YEAR BUILT - 1900



1612 N 16th St, Clarksburg, WV, 26301

SQUARE FOOTAGE - 990
BED - 2
BATH - 2
LOT SIZE - .29 acres
YEAR BUILT - 1945



449 Church Street, Elkview, WV, 25071

SQUARE FOOTAGE - 2,397
BED - 4
BATH - 2
LOT SIZE - .8 acres
YEAR BUILT - 1982



180 N Main St, Keyser, WV, 26726

SQUARE FOOTAGE - 1,712
BED - 2
BATH - 1
LOT SIZE - 3,485 sqft
YEAR BUILT - 1900



339 Green Valley Dr., St Albans, WV, 25177

SQUARE FOOTAGE - 960
BED - 2
BATH - 1
LOT SIZE - .28 acres
YEAR BUILT - 1952



136 James St., St. Albans, WV, 25177

SQUARE FOOTAGE - 780
BED - 2
BATH - 1
LOT SIZE - 1.06 acres
YEAR BUILT - 1964



923 Cedar St., Kemmerer, WY, 83101

SQUARE FOOTAGE - 1,533
BED - 3
BATH - 2
LOT SIZE - 3,484 sqft
YEAR BUILT - 1899



LIMITED TITLE PROPERTIES

LIMITED TITLE: Properties listed as "Limited Title" or shown on exhibit A-2 of any Purchase and Sale Agreements may not have insurable title but bidder may still seek to obtain a policy. All other properties will be sold with an owner's title insurance policy paid for by the buyer.

19940 SW 109th Pl, Dunnelleon, FL, 34432

SQUARE FOOTAGE - 1,400
BED - 4
BATH - 2
LOT SIZE - not available
YEAR BUILT - 1998



23 S 16th St, Belleville, IL, 62220

SQUARE FOOTAGE - 870
BED - 3
BATH - 2
LOT SIZE - not available
YEAR BUILT - 1847



254 E 136th St, Chicago, IL, 60601

SQUARE FOOTAGE - 1,265
BED - 3
BATH - 1
LOT SIZE - 5,800 sqft
YEAR BUILT - 1905



6525 S Marshfield Ave, Chicago, IL, 60636

SQUARE FOOTAGE - 2,148
BED - 6
BATH - 2
LOT SIZE - not available
YEAR BUILT - not available



8345 S Baltimore Ave, Chicago, IL, 60601



SQUARE FOOTAGE - 1,976
BED - 8
BATH - 2
LOT SIZE - 3,049 sqft
YEAR BUILT - 1913

354 E Fulton, Paxton, IL, 60957



SQUARE FOOTAGE - 1,224
BED - 3
BATH - 1
LOT SIZE - 7,840 sqft
YEAR BUILT - 1951

1511 7th St W, Rock Island, IL, 61291



SQUARE FOOTAGE - 1,728
BED - 3
BATH - 1
LOT SIZE - 4,356 sqft
YEAR BUILT - 1909

713 S Walnut St., Sesser, IL, 62884



SQUARE FOOTAGE - 950
BED - 3
BATH - 1
LOT SIZE - not available
YEAR BUILT - 1920

919 E Glenview Dr, Tuscola, IL, 61953

SQUARE FOOTAGE - 864
BED - 3
BATH - 1
LOT SIZE - 8,059 sqft
YEAR BUILT - 1957



606 W Main St, Chesterfield, IN, 46017

SQUARE FOOTAGE - 738
BED - 2
BATH - 1
LOT SIZE - .26 acres
YEAR BUILT - 1948



937 N Oxford St, Indianapolis, IN, 46201

SQUARE FOOTAGE - 2,145
BED - 3
BATH - 1
LOT SIZE - 3,502 sqft
YEAR BUILT - 1910



758 N Spring St, Wabash, IN, 46992

SQUARE FOOTAGE - 840
BED - 2
BATH - 1
LOT SIZE - 5,662 sqft
YEAR BUILT - 1955



300 S Augusta Ave, Baltimore, MD, 21229

SQUARE FOOTAGE - 1,154
BED - 2
BATH - 1
LOT SIZE - 1,498 sqft
YEAR BUILT - 1920



62 Bidwell St. W., Battle Creek, MI, 49015

SQUARE FOOTAGE - 1,268
BED - 2
BATH - 1
LOT SIZE - 8,442 sqft
YEAR BUILT - 1930



2001 Mallery St, Flint, MI, 48504

SQUARE FOOTAGE - 792
BED - 2
BATH - 2
LOT SIZE - 4,791 sqft
YEAR BUILT - 1929



2907 Mason St, Flint, MI, 48504

SQUARE FOOTAGE - 1,256
BED - 3
BATH - 1
LOT SIZE - 5,662 sqft
YEAR BUILT - 1920



1735 Prospect Street, Flint, MI, 48504

SQUARE FOOTAGE - 731
BED - 1
BATH - 1
LOT SIZE - 4,791 sqft
YEAR BUILT - 1927



2049 Stanford Ave., Flint, MI, 48503

SQUARE FOOTAGE - 1,502
BED - 4
BATH - 2
LOT SIZE - 1,306 sqft
YEAR BUILT - 1938



1047 Wood St, Muskegon, MI, 49442

SQUARE FOOTAGE - 1,381
BED - 5
BATH - 2
LOT SIZE - 6,969 sqft
YEAR BUILT - 1800



3350 Dixie Ct, Saginaw, MI, 48601

SQUARE FOOTAGE - 1,555
BED - 3
BATH - 1
LOT SIZE - 9,240 sqft
YEAR BUILT - 1940



147 Louisiana Ave, Jackson, MS, 39209



SQUARE FOOTAGE - 1,662
BED - 4
BATH - 1
LOT SIZE - 9,000 sqft
YEAR BUILT - 1942

125 Patsy Lemons Ln, Lillington, NC, 27546



SQUARE FOOTAGE - 1,948
BED - 3
BATH - 2
LOT SIZE - 1.02 acres
YEAR BUILT - 1990

2160 11th St SW , Akron, OH, 44301



SQUARE FOOTAGE - 1,040
BED - 3
BATH - 1
LOT SIZE - 5,174 sqft
YEAR BUILT - 1918

1342 South Street SE, Warren, OH, 44481



SQUARE FOOTAGE - 1,352
BED - 3
BATH - 1
LOT SIZE - 3,998 sqft
YEAR BUILT - 1920

2817 Merriweather St NW, Warren, OH, 44481



SQUARE FOOTAGE - 923
BED - 4
BATH - 1
LOT SIZE - 6,534 sqft
YEAR BUILT - 1959

29042 US Highway 23, Big Stone Gap, VA, 24219



SQUARE FOOTAGE - 991
BED - 3
BATH - 1
LOT SIZE - not available
YEAR BUILT - 1949

255 Howeland Cir, Danville, VA, 24540



SQUARE FOOTAGE - 3,004
BED - 3
BATH - 2
LOT SIZE - 7,405 sqft
YEAR BUILT - 1950

BIDDING INFORMATION

Summary of Bidding Procedures¹

Bids are solicited for the properties described in this offering (the “Properties”) as a whole or in subgroups by State. There is also a subgroup of “Limited Title” properties. Acceptance may take into account bulk bids, subgroup bids or any combination.

Bidding shall be by sealed bid in two rounds submitted to Braunco, Inc. at David@Braunco.com Attention: Ingersoll Auction.

First Round Purchase Contract forms and Highest and Best Round Purchase Contract forms and related information are available at <http://www.ingersollauction.smartroom.com/>.

FIRST ROUND BIDDING: All First Round Bids:

- a. Shall be submitted on the First Round Purchase Contract form as a binding offer executed by the Bidder;
- b. Shall be accompanied by proof of cash funds equal to or greater than the amount of the First Round Bid;
- c. Shall be submitted to Braunco, Inc. at David@Braunco.com Attention: Ingersoll Auction no later than Friday, November 2, 2018 at 12 noon ET (the “First Bid Deadline”); and
- d. Shall include a Registration Deposit of \$10,000 for each subgroup included in the Bid (for example if the Bid is for eight subgroups, the Registration Deposit shall be not less than \$80,000) and the Registration Deposit shall be wired to the Escrow Company BCHH, Inc. (www.bchhtitle.com) by no later than the First Bid Deadline.

¹ This Summary is intended for the convenience of Bidders and in no way will change the court approved Bid Procedures.

BIDDING INFORMATION - CONTINUED

HIGHEST AND BEST ROUND BIDDING:

- a. The First Round Bidders submitting the top 33 1/3 percent of First Round Bids as determined by Seller will be notified by 9 am ET on Wednesday November 7, 2018 that they are approved Qualifying Bidders that will submit bids in the Highest and Best Round.
- b. The Highest and Best Round Bids shall be submitted as a fully executed and binding Final and Best Round Purchase Contract by no later than 12 noon ET on Thursday November 8, 2018 and shall be accompanied by proof of cash funds equal to or greater than the Highest and Best Round Bid
- c. The Final and Best Round Bid(s) accepted by the Seller (the Successful Bidder(s)) will be notified by Friday November 9, 2018 no later 9 am ET. The Seller reserves the right to accept a First Round Bid as a Successful Bid.

SUCCESSFUL BIDDERS

The Successful Bidder(s) shall wire a Purchase Deposit of ten percent (10%) of the Successful Bid amount to the Escrow Company on and no later than Friday November 9, 2018. Successful Bidders shall provide proof of wire to Braun no later than Monday November 12 Noon ET. The Registration Deposit may be applied to the Purchase Deposit.

COURT CONFIRMATION

The Successful Bid(s) will be submitted to the Bankruptcy Court for the Middle District of Florida, Orlando Division for Court confirmation and final approval at a hearing on November 14, 2018 at 2:45 pm ET.

CLOSING

The closings shall occur no later than thirty days after such final Court approval of the sale. The balance of the purchase price shall be due at closing.

REGISTRATION REQUIREMENTS

\$10,000 Registration Deposit for each subgroup included in the Bid (for example if the Bid is for eight subgroups, the Registration Deposit shall be not less than \$80,000) .

The Registration Deposit shall be wired to the Escrow Company BCHH, Inc. (www.bchhtitle.com) by no later than the First Bid Deadline. Cash, cashier's check, credit card are not accepted.

Proof of funds required i.e. (current bank statement, bank letter of credit or lender guarantee document) to be provided with your first round bid.



CITIBANK
444 MAMARONECK AVE
WHITE PLAINS, NY 10605
Phone: 1-877-528-0990

Account Name- MAIN
BCHH, Inc. Main Escrow Account

ABA Routing # 021000089

ACCOUNT# 4972767378

Nationwide. Full Service. Title Agency.

BCHH, Inc.
181 Montour Run Rd., Coraopolis PA 15108

Our Name Is Behind Our Service

THESE ARE THE FINAL WIRING INSTRUCTIONS THAT YOU WILL RECEIVE FROM BCHH. DUE TO THE INCREASE IN BANKING FRAUD, IF YOU RECEIVE CONFLICTING OR DIFFERING WIRING INSTRUCTIONS PURPORTED TO BE FROM BCHH, PLEASE CALL OUR OFFICE VIA A RECOGNIZED TELEPHONE NUMBER TO CONFIRM THE ACCURACY AND AUTHENTICITY OF THE WIRING INSTRUCTIONS.

Candi Salinetto csalinetto@bchhinc.com 412-275-3720 x 307

DISCLAIMERS, DISCLOSURES AND CONDITIONS

1. Neither BRAUN, its members, managers officers, employees or agents, nor any of its partners, directors, officers, employees and agents, nor selling parties, make any representations or warranties, whether express or implied, by operation of law or otherwise, with respect to this offering memorandum or the property or any materials, statements or information contained herein or relating thereto, or as to the accuracy or completeness of such materials, statements or information, or as to the condition, quality or fitness of the property, or assumes any responsibility with respect thereto. Such materials, statements and information have in many circumstances been obtained from outside sources and have not been tested or verified. BRAUN is selling these properties on behalf of the US Bankruptcy court; sellers are not providing any disclosures regarding condition and knowledge of the property.
2. Seller and BRAUN make no representations or warranties as to the approved use of the Property.
3. Properties are sold as-is with no representations as to condition or safety of the properties being auctioned.
4. Before bidding, all prospective buyers must review the form Purchase and Sale Agreement and by submitting a bid agree to be bound by its terms.
5. If the purchase price attributable to any individual property does not cover the taxes and closing costs for that property, the property may be removed from the auction according to the terms of the Purchase and Sale Agreement.
6. Those properties listed as "Limited Title" or shown on exhibit A-2 of any Purchase and Sale Agreements may not have insurable title but bidder may still seek to obtain a policy. All other properties will be sold with an owner's title insurance policy, subject to exceptions set forth in the Purchase and Sale Agreement, paid for by the buyer.
7. Before bidding, all prospective buyers must review all documents provided in the auction dataroom located on the BMCS website. www.ingersollauction.smartroom.com
8. Seller is a debtor in possession under chapter 11 of the bankruptcy code and bidder and Purchase and Sale Agreement will be subject to the jurisdiction of the Court for approving the sale and resolving any disputes.
9. Bidders are responsible for conducting their own due diligence. BRAUN advises all bidders to do their own due diligence in regards to assessing value and condition of the Property.
10. This is a no reserve, no minimum bid auction. The Court will confirm sale as long as all sale terms and conditions are met.
11. Bidders may not disclose their bid amount to any other bidder or potential bidder.
12. The photographs and square footage provided for each property have been assembled from public records and other sources and may be out of date and inaccurate as of the publication of this memorandum.